

**Argus- By Dead Puppet Society**  
**Touring Technical Specification B V1**  
**Music Playback Option**



Touring Company

4 Cast Members

1x SM

Equipment with Touring Company

<b>Set</b>	1x 4m Circle Truss (in 4 arcs)
	12x plywood set cladding
	12x steel arms w/scaff clamp
	6x cladding joins
	2x 1000mm roller legs
	2x 3000mm steel roller legs
	4x short cross brace pipe
	3x 2500mm 48 OD Steel pipe
	3x 2000mm 48 OD Steel Pipe
	2x 3200mm 48 OD Steel Pipe
	2x 3900mm 48 OD Steel Pipe
	2x Cross brace length
	6x Fixed (90 Degree) scaff clamps
	27x Swivel scaff clamps
<b>Costume and Props</b>	2x Small props road case
<b>Lighting</b>	3x LED par (Venue to supply if available)
	4x Festoon lengths
	5x BC pendant bulb fittings

**Sound** 1x Macbook Pro with QLab playback system

**Performance**

Running time of 45 minutes, no interval

**Pre-rig and set up**

*Lighting*

- Lighting to be rigged, coloured and patched prior to companies arrival as per venue issued lighting plan
- Floor Electrics to be prepped and circuits to be run- however will be placed following the set build
- Lighting to be focussed during company bump in
- Show file is in both ION format and MA format- Please advise on venue console

*Staging*

- Scaff pipe and scaff clamps for wheel structure may be provided by the venue- TBC in liaison with the venue

\*Risk Assessments and Safe Work Method Statements (SWMS) Available prior to bump in\*

**Bump In**

- 2x Lighting technicians for 5 hours

- 1x Staging for 4 hours

- 1x Sound technician for 3 hours (Or minimum call)

(Expecting that the venue has pre-rigged lighting, and PA is currently installed in standard position)

**Performance**

- **1x Sound Operator**
- **1x Lighting Operator**

**Bump Out**

- 1x Staging for 3 hours (Or minimum call)

- 1x Lighting for 3 hours (Or minimum call)

- 1x Sound for 3 hours (Or minimum call)

**Dimensions**

Black Box set Up  
Proscenium Set Up  
Minimum 5m usable stage width  
Stage Depth min 6m  
Floor to Grid Height Minimum 4m

**General Storage**

Storage space is required in the theatre for any excess touring equipment not used. 2-3 cubic metres if possible.

**Lighting**

Venue specific plans and paperwork to be provided closer to date. Generic plan, patch sheets and focus notes to come.

**Audio and Talkback**

**Venue to Supply:**

1x mixing console with facility for stereo input from computer

FOH audio set up (+ subs, if possible)

2x condenser mics on short stands DS of wheel-Performers vocal

1x Choir mic, hung in centre of circle- Performers vocal

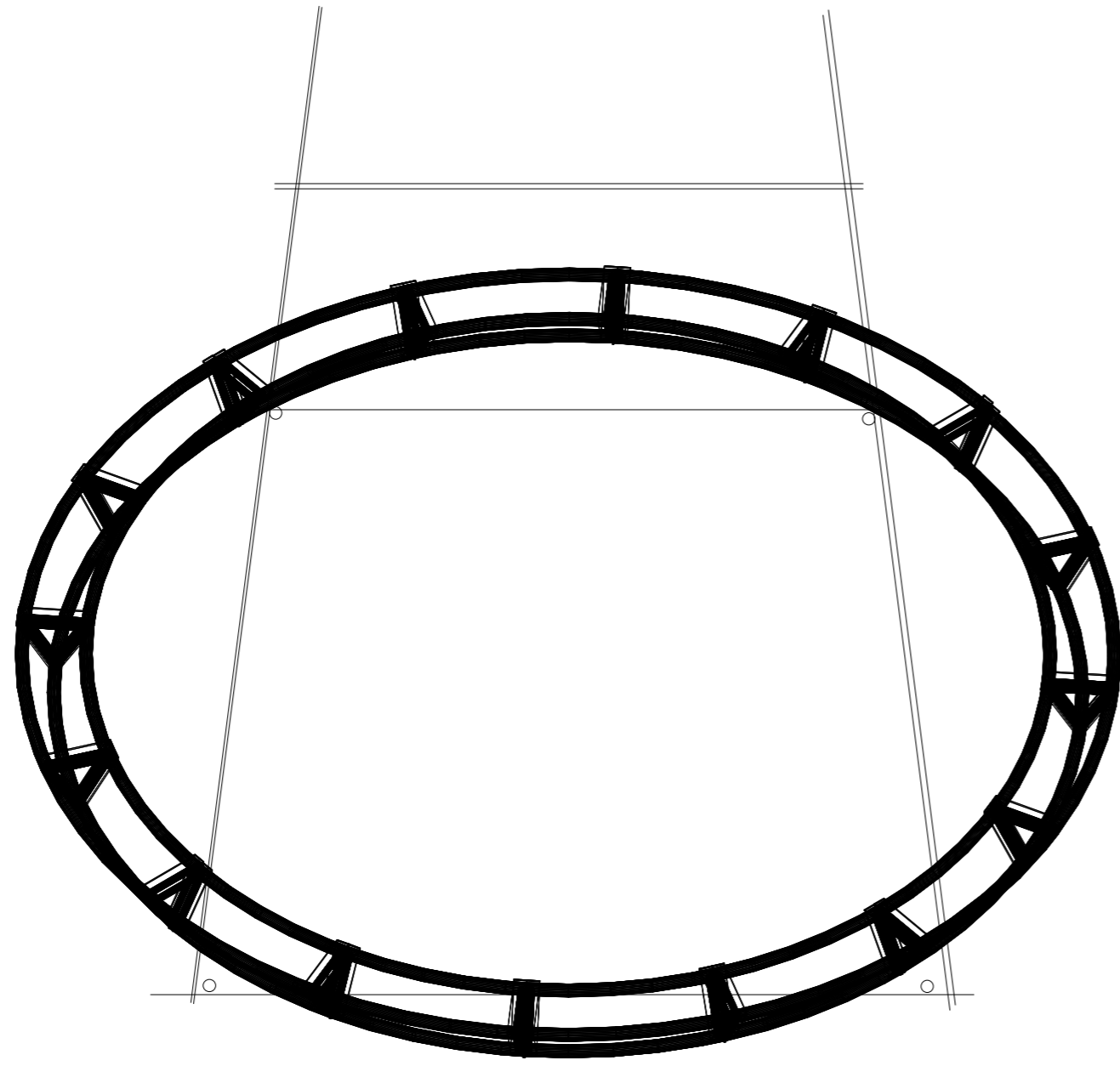
3x Talkback headsets (2x control position, 1x stage level)

**Dressing Rooms**

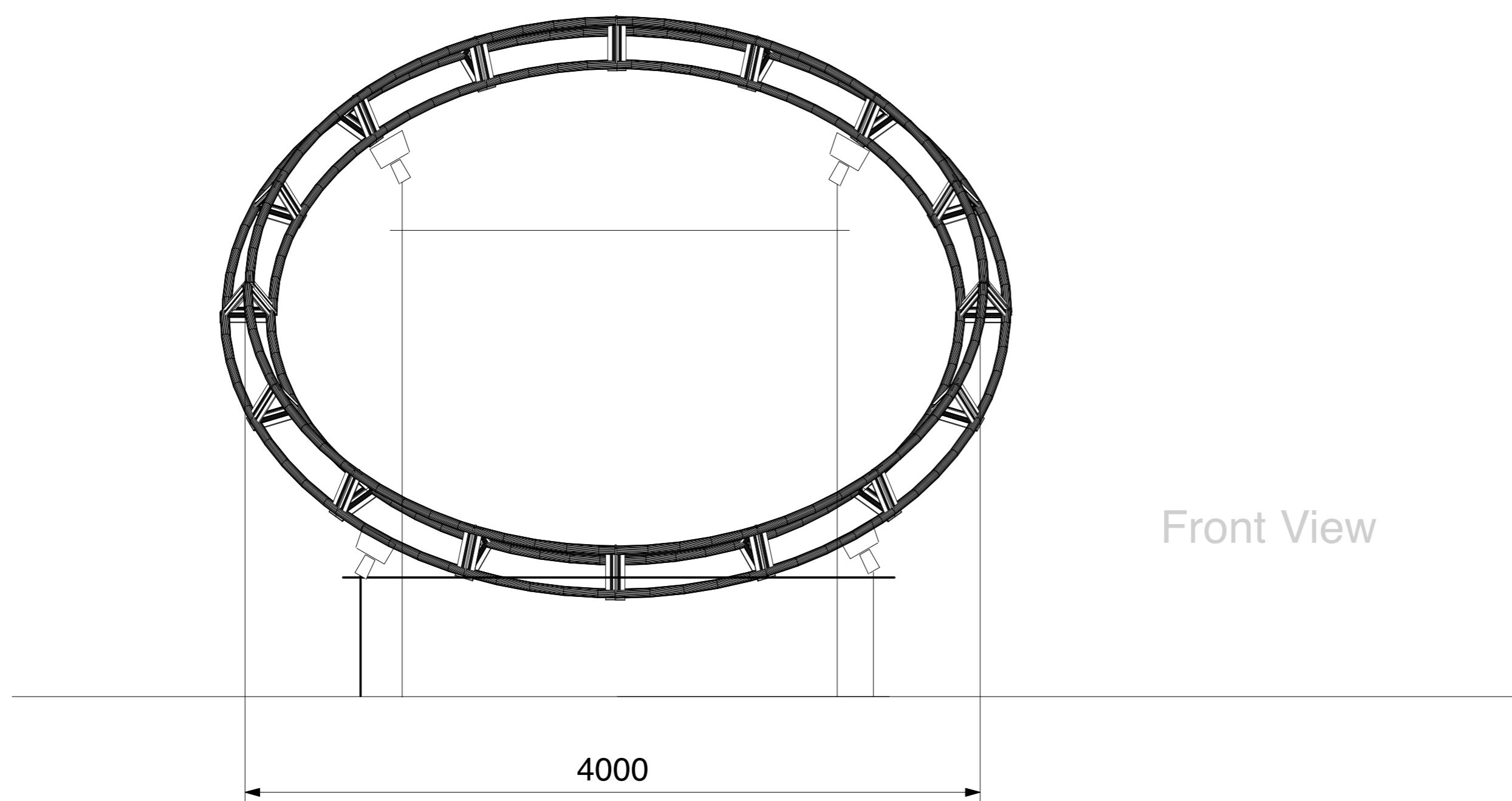
1x dressing room for cast members  
1x production dressing room

**Wardrobe/Laundry**

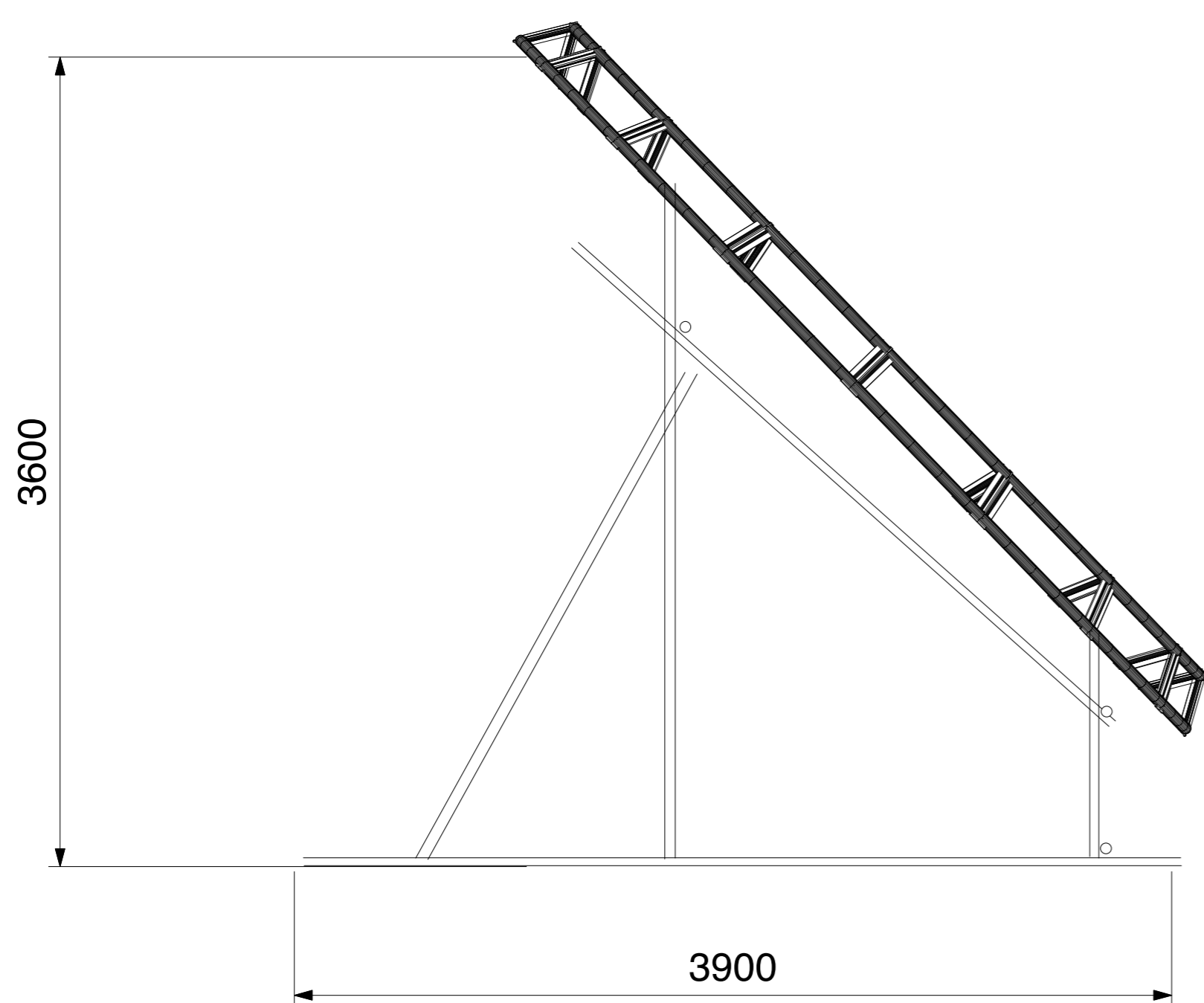
Access to washing machine and dryer + ironing/steaming facilities  
1 Clothes rack in performer dressing room



Top View



Front View



Side View- Opposite Prompt

**Notes:**

- Drawings do not depict plywood cladding- bare truss only
- Dimensions are subject to change
- All pipe is 48 OD- Steel
- Build drawing only- Venue specific plans to be issued prior to bump in

**ARGUS**

By Dead Puppet Society

SET DRAWING V1  
1:25 @ A1

As at 5 July 2013  
Drawn By Whitney Eglington

# ARGUS

By Dead Puppet Society

## Standard Production Schedule B (Music Playback Option)

Time	Activity	Required
0800	Load into venue Set Position, venue induction etc	SM, Venue Crew
0830	Begin Set construction	SM Staging x 1
1230	Sound Set Up Props bump in LX Prac Rig	1x Sound SM, Cast 2x LX
1330	LX Focus Commence	SM, 2x LX
1530	LX Plot/ Fixups	SM , 2x LX
1730	DINNER	All

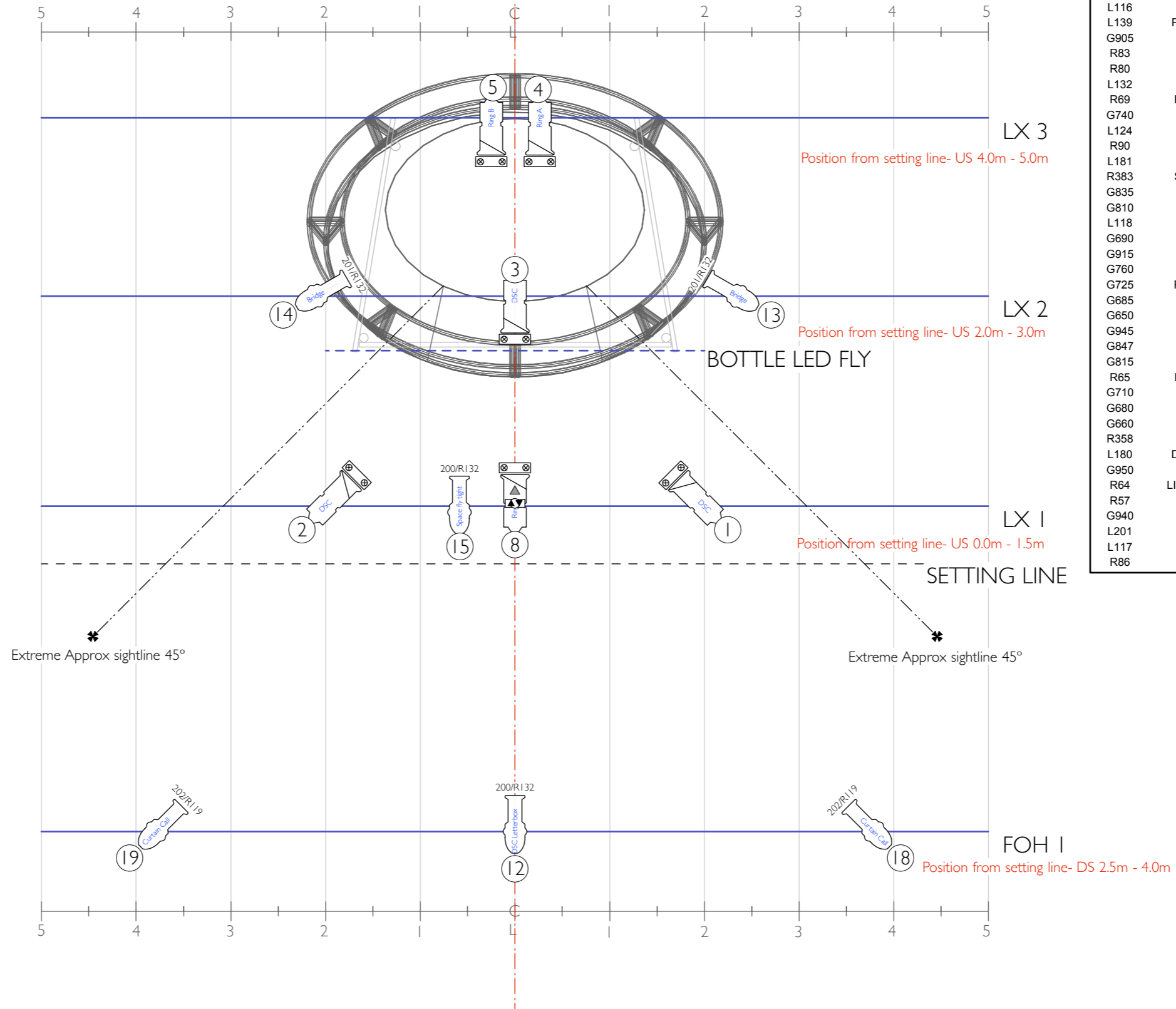
|Crew Summary: |1x Staging (4hrs), 2x LX (5hrs), 1x SND (4hrs) |

**Please note this is a sample schedule- actual schedule to be issued prior to bump in subject to venue specific needs.**

# CXI COLOUR CHEAT SHEET

Color Number	Color Name	Color Number	Color Name
---	CLEAR	G960	MEDIUM LAVENDER
---	CUSTOMER 2	G790	ELECTRIC BLUE
---	CUSTOMER 1	G995	ORCHID
L116	MED BLU GRN	G990	DARK LAVENDER
L139	PRIMARY GREEN	R52	LIGHT LAVENDER
G905	DARK BLUE	R54	SPECIAL LAVENDER
R83	MEDIUM BLUE	G540	PALE GREEN
R80	PRIMARY BLUE	R48	ROSE PURPLE
L132	MEDIUM BLUE	L203	1/4 CT BLUE
R69	BRILLIANT BLUE	L101	YELLOW
G740	OFF BLUE	R344	FOLIES PINK
L124	DARK GREEN	R10	MEDIUM YELLOW
R90	DRK YELL GRN	G450	SAFFRON
L181	CONGO BLUE	R312	CANARY
R383	SAPPHIRE BLUE	L104	DEEP AMBER
G835	AZTEC BLUE	G325	BASTARD AMBER
G810	MOON BLUE	R09	PALE AMBER GOLD
L118	LIGHT BLUE	R14	MEDIUM STRAW
G690	BLUEGRASS	G155	LIGHT PINK
G915	TWILIGHT	G330	SEPIA
G760	AQUA BLUE	L204	FULL CT ORANGE
G725	PRINCESS BLUE	R15	DEEP STRAW
G685	PISTACHIO	G160	CHORUS PINK
G650	GRASS GREEN	G343	HONEY
G945	ROYAL PURPLE	L179	CHROME ORANGE
G847	CITY BLUE	L110	MIDDLE ROSE
G815	MOODY BLUE	L105	ORANGE
R65	DAYLIGHT BLUE	R36	MEDIUM PINK
G710	BLUE GREEN	R318	MAYAN SUN
G680	KELLY GREEN	G335	CORAL
G660	MED GREEN	G130	ROSE
R358	ROSE INDIGO	L111	DARK PINK
L180	DARK LAVENDER	R23	ORANGE
G950	PURPLE	G315	AUTUMN GLORY
R64	LIGHT STEEL BLUE	R44	MIDDLE ROSE
R57	LAVENDER	R32	MEDIUM SALMON PINK
G940	LIGHT PURPLE	R22	DEEP AMBER
L201	FULL CT BLUE	G110	DARK ROSE
L117	STEEL BLUE	G120	BRIGHT PINK
R86	PEA GREEN	G180	CHERRY
		R19	FIRE
		L128	BRIGHT PINK
		R39	EXOTIC SANGRIA
		R46	MAGENTA
		R26	LIGHT RED

SET POSITIONED APPROX 1m-2m US of Setting Line  
Sightlines for set will determine its position in each venue. This will in turn solidify LX Bar positions.



## FLOOR LX

Items positioned USC of 'wheel' set structure



## BOTTLE LED RGB STRIP

On fly pully to be rigged above DSC of wheel



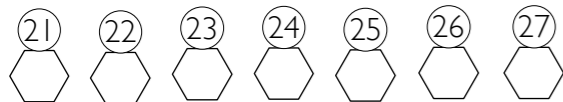
## HAZER

Venue to provide if available

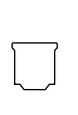


## FESTOON

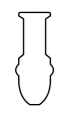
To be hung above set between LX positions on stage



VENUE

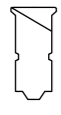


1200 FRESNEL



PROFILE 30° - 40°

TOURING



PACIFIC 23° - 50°



ROSCO TWIN SPIN



7.5" CXI SCROLLER



FESTOON STRING



BAYONET PLUG POSITION



Custom Gobo Chan 8



COLOUR PURPOSE CHANNEL

### NOTES

- All Fresnels to be rigged with Barndoors.
- All profiles have 4 workable shutters.
- All Lamps to be rigged with full colour and accessories.
- All gel is LEE unless otherwise stated.
- All measurements of lighting positions from setting line take into account an approx LX bar height of 6m from stage floor.
- All hanging bayonets are clear white bulbs- can be mix fancy/reg size.
- Gobos in twin spins are standard medium breaks ups.

## ARGUS

By Dead Puppet Society

STANDARD LIGHTING PLAN

NATIONAL TOURING

1:50 @A3

PRODUCTION TEAM  
director DAVID MORTON  
lighting designer JASON GLENWRIGHT  
touring Stage manager/realiser SAMUEL MAHER

06/05/2015- VER 1.0

DRAWN BY J.G.

© JASON GLENWRIGHT

